



**STONE**TERRA™  
WALL SYSTEM

**MORE POSSIBILITIES - LESS EFFORT**

Main office: 815 NE 172nd Avenue, Vancouver, WA 98685  
360-694-0141 / 800-377-3877 / 360-694-0281 fax

[www.stoneterra.net](http://www.stoneterra.net)

A retaining wall block that takes advantage of the positive attributes that specifiers and customers are trying to find.

The patent pending StoneTerra System offers an attractive architectural face and simple installation all at a sensible per square foot cost.

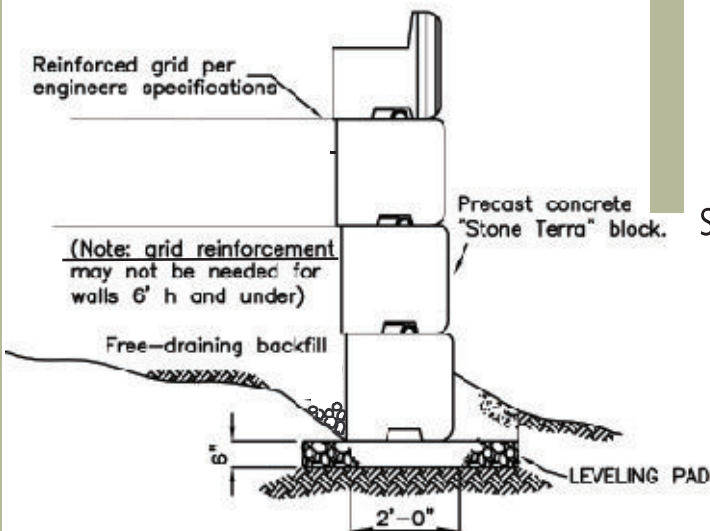
Whether you are a homeowner, contractor, landscape designer or engineer / architect StoneTerra is the right block for your next project.



StoneTerra Top Block  
Maximizes Valuable Property

- Natural Quarried Rock Finish
- Galvanized Steel Lifting Loop
- 8 Sq. Ft. of Face per Block
- 8 Foot Minimum Radius of Curvature

Create Reinforced Walls (MSE) or  
Non-Reinforced Walls (Gravity)

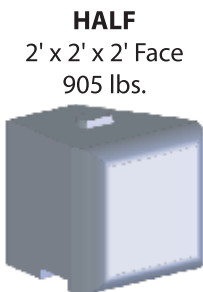


Advantages

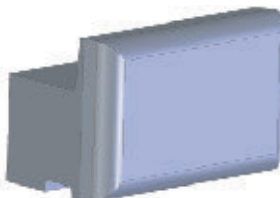
- Inter-locking
- Easy & Fast Installation
- Set with Small Equipment
- Curved Walls
- Build in Limited Space
- Low Cost



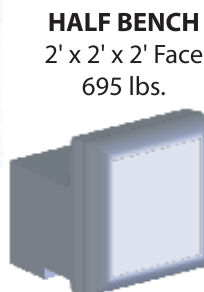
**FULL**  
2' x 2' x 4' Face  
1750 lbs.



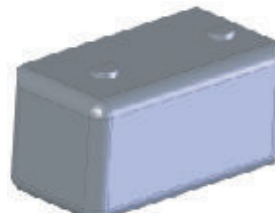
**HALF**  
2' x 2' x 2' Face  
905 lbs.



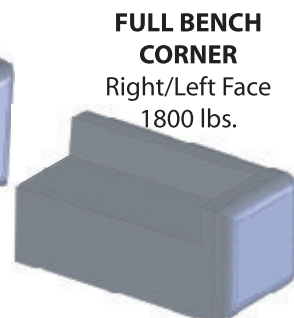
**FULL BENCH**  
2' x 2' x 4' Face  
1375 lbs.



**HALF BENCH**  
2' x 2' x 2' Face  
695 lbs.



**FULL CORNER**  
Right/Left Face  
2300 lbs.



**FULL BENCH CORNER**  
Right/Left Face  
1800 lbs.